



**SINGAPORE  
GARDEN  
FESTIVAL**

4 – 12 July 2026  
Gardens by the Bay

**10<sup>th</sup> Edition**



**OFFICIAL SHOW PROGRAMME**

# Content

|   |    |
|---|----|
| Show Information                              | 02 |
| Show Gardens: All-Stars Edition               | 04 |
| Floral Windows to the World Championship      | 13 |
| My Living Space                               | 16 |
| Orchid Extravaganza and Singapore Orchid Show | 19 |
| General Displays                              | 21 |
| Planters Market x SGF 2026 MarketPlace        | 33 |
| Acknowledgements                              | 38 |
| Show Map                                      | 41 |

All information is correct at the time of publication and is subject to change without prior notice.

# Show Information

## Dates

4 - 12 July 2026

## Location

Gardens by the Bay

## Singapore Garden Festival Opening Hours:

10am to 10pm daily (Last entry at 9.30pm)

## Flower Dome Opening Hours:

9am to 9pm daily (Last entry at 8.30pm)

## Planters Market x SGF 2026 MarketPlace Opening Hours:

10am to 8pm daily (Free admission)

| Singapore Garden Festival 2026 Ticket Pricing<br>(All days, inclusive of GST) |                                   |   |   |
|---|-----------------------------------|---|---|
| Singapore Resident <sup>1</sup>   |                                   |   |   |
| Category  | Adult<br>(13 to 59 Years Old)     | Senior <sup>2</sup><br>(60 Years Old and Above) | Child <sup>2</sup><br>(3 to 12 Years Old) |
| Singapore Garden Festival <sup>3</sup>  | <b>S\$12</b>                      | <b>S\$8</b>                                     | <b>S\$8</b>                               |
| Singapore Garden Festival <sup>3</sup><br>and Flower Dome <sup>4</sup>        | <b>S\$20</b>                      | <b>S\$15</b>                                    | <b>S\$12</b>                              |
| Non-Resident  |                                   |   |   |
| Category  | Adult<br>(13 Years Old and Above) | Child <sup>2</sup><br>(3 to 12 Years Old)       |   |
| Singapore Garden Festival <sup>3</sup>  | <b>S\$24</b>                      | <b>S\$15</b>                                    |   |
| Singapore Garden Festival <sup>3</sup><br>and Flower Dome <sup>4</sup>        | <b>S\$32</b>                      | <b>S\$18</b>                                    |   |

<sup>1</sup> Singapore Resident rates apply to Singapore Citizens, Permanent Residents and individuals living in Singapore on valid passes including employment pass, work permit and dependent pass. Proof of residency and local bank card may be required at the point of ticket purchase and/or admission. In the event proof of residency is not able to be produced, ticket upgrades will be required.

<sup>2</sup> ID verification may be required for admission.

<sup>3</sup> Tickets to SGF is valid for single day admission only. Multiple entries are allowed within the same day.

<sup>4</sup> Single entry only for Flower Dome.

Other terms and conditions apply. Please check Gardens by the Bay website for more details.

Show Information

## People’s Choice Award

Scan the QR code at your favourite display and stand to win a two-night stay at Pan Pacific Singapore! Terms and conditions apply.

Voting period:

4 July (Saturday), 10am to 8 July (Wednesday), 10pm

Show Information

## Community’s Choice Award

Scan the QR code at your favourite display and stand to win a Daikin Air Purifier! Terms and conditions apply.

Voting period:

4 July (Saturday), 10am to 8 July (Wednesday), 10pm

Show Information

## Floral Demonstrations

Join our exciting floral demonstrations at the Floral Windows to the World Championship tent. Scan the QR code for the programme.



<https://go.gov.sg/floraldemo>

Show Gardens: All-Stars Edition

## L01 - WELLNESS LIVING IN NATURE

Designer  
**John Tan (Singapore)**

Implementing Partner  
**Esmond Landscape & Horticultural Pte Ltd**

Concept

Designed as a therapeutic sanctuary from the stresses of modern life, this garden takes visitors on a sensory journey through nature’s healing landscape. The experience begins with a gentle walk along a flower-lined ramp, leading to a tranquil gathering space shaded by overhanging trees and the soft sound of flowing water.

Natural art is revealed through preserved teak roots and bamboo canopies, whilst a cascading water curtain at the garden’s heart creates a refreshing mist surrounded by lush vegetation and fruit-bearing plants.

Designed to be inclusive and accessible to all, including those with special needs, the garden harnesses the restorative power of therapeutic horticulture to engage the senses, encourage movement, and foster social connection – ultimately offering every visitor a path to recovery, discovery, and inner calm.



## L02 - INTERIORITY OF NATURE

Designer  
**Stefano Passerotti (Italy)**

### Concept

Implementing Partner  
**Mao Sheng Quanji Construction Pte Ltd**

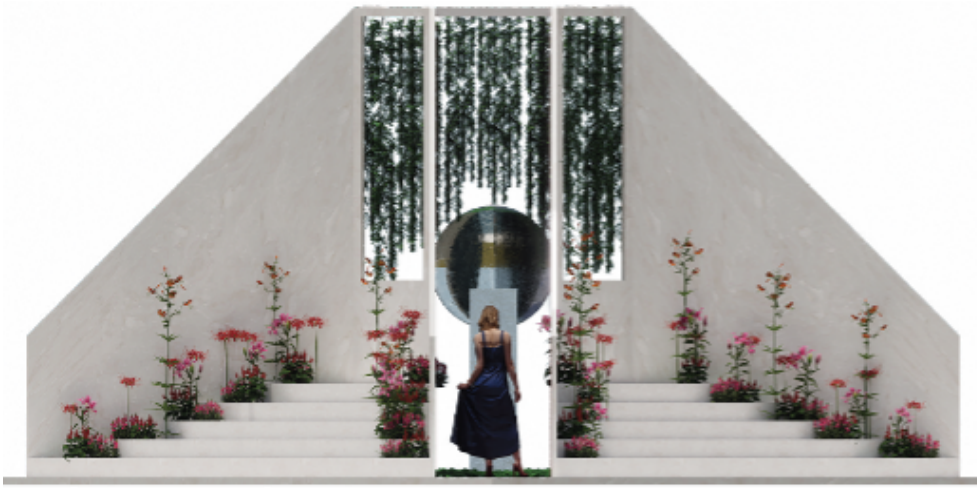
*Interiority of Nature* is a garden that welcomes visitors to a path of introspection, where they can encounter impressions made of plants, light, water, shadow, reflections, and materials.

The project sprouts from a few, fundamental geometries. On the outside, four simple compositions represent a superficial view of nature as inert actors on a stage.

Four separate pathways, each representative of a season and element (water, wood, fire, and metal), guide the visitor to the inner core, a spherical flower.

This flower represents Earth, the fifth element, a place of synthesis, roots and balance. A dewdrop fleetingly touches the heart of the flower, a nod to the fragility of life and its cyclical nature.

*Interiority of Nature* embodies both nature that we see externally and the Nature within Us.



## L03 - TOKONOMA GARDEN

Designer  
**Kazuyuki Ishihara (Japan)**

### Concept

Implementing Partner  
**Prince's Landscape Pte Ltd**

*Tokonoma Garden* is a peaceful Japanese garden designed to be viewed from a tokonoma, thoughtfully composed with stone, moss, water, and seasonal plants to evoke a sense of calm and natural beauty.



Show Gardens: All-Stars Edition

## L04 - GATHERING THE VOID

Designers  
**Andrew Wilson and Gavin McWilliam (United Kingdom)**

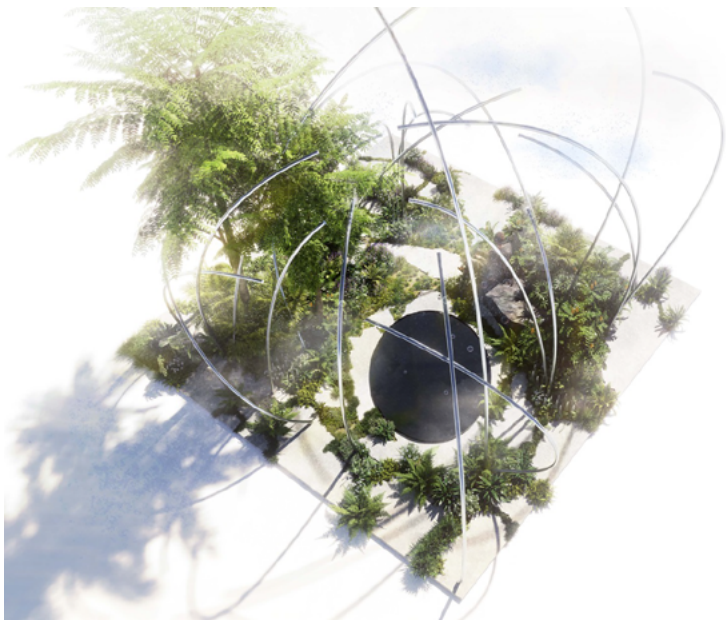
Implementing Partner  
**Nature Landscapes Pte Ltd**

### Concept

*Gathering the Void* explores the moment between dissolution and emergence, framing emptiness not as absence but as a generative pause before transformation.

An open framework of curving elements forms a light, unfinished structure that resists enclosure and invites movement. At its centre, a still body of water creates a quiet point of reflection, anchoring the garden's spatial experience.

Lush vegetation weaves through the structure, expressing resilience, adaptation, and renewal. The garden balances built form and planting to create layered viewing axes and moments of stillness. Rather than directing visitors, the space holds them, offering an immersive environment where reflection, change, and possibility can come together.



Show Gardens: All-Stars Edition

## L05 - BETWEEN THE LINES

Designers  
**Mark and Emily Cook (United States of America)**

Implementing Partner  
**Green Forest Landscape Pte Ltd**

### Concept

In the realm of design, individual elements often stand alone in their depiction, yet they achieve greater significance when paired with their surroundings. This interaction ignites emotional responses, shaping the atmosphere of a space. Designers recognise that every angle and viewpoint offers a distinct perspective of each plant, structure, and elevation, making the environment dynamic and monumental for all who experience it.



Show Gardens: All-Stars Edition

## L06 - HABITAT FOR THE SOUL

Designer  
**Leon Kluge (South Africa)**

### Concept

This garden is inspired by a philosophy that invites nature into living spaces where the line between architecture and nature is blurred. It is a space where the soul can truly rest and unwind from the stresses of the busy city.

Implementing Partner  
**Earthscape Concepts Pte Ltd**

The centrepiece is a pavilion inspired by rolling mountains, with streams rushing into a waterside habitat where wildlife can flourish. Using natural materials, this sanctuary is nestled in the landscape, providing a habitat for the soul to reflect and meditate.



Show Gardens: All-Stars Edition

## L07 - BENEATH THE STARS

Designers  
**Eliam Eng and Andy Eng (Singapore)**

### Concept

There are always stars above us, yet in a world flooded with light, we rarely see them.

Implementing Partner  
**Nyee Phoe Flower Garden Pte Ltd**

*Beneath the Stars* reflects on how modern life has quietly dimmed one of nature's simplest wonders – the night sky. Surrounded by brightness, noise, and movement, we lose not only our view of the stars, but also the stillness and wonder that come with them. Within a compact urban setting, this garden creates a moment of contrast – a refuge where nature softens the world around us and the sky begins to feel near again.

Layered planting and overhanging greenery create shelter, shadow, and immersion. A canopy-like structure offers refuge beneath a living ceiling, while a tall vertical form, inspired by rainforest trees and the silhouette of a telescope, gently lifts the gaze upward.

Balanced by clean lines and a composed path, the garden expresses a distinctly Singaporean sensibility – lush yet restrained, natural yet precise. *Beneath the Stars* invites us to pause, look up, and rediscover a sense of wonder.



Show Gardens: All-Stars Edition

# L08 - ORIGAMI PAPER SAILBOAT

Designer  
Inch Lim (Malaysia)

Implementing Partner  
SUGURU INC Pte Ltd

### Concept

*Origami Paper Sailboat* is a contemplative garden inspired by the childhood joy of setting a paper boat afloat during a tropical rainstorm. Rooted in nostalgia, it recalls those familiar downpours when children would gather by the downpipe, waiting for the rush of water to carry their handmade boats away.

Shaped like an origami sailboat and crafted with translucent shoji paper, the structure softly diffuses light, creating a delicate and intimate atmosphere. Slits within its folded planes offer glimpses inside, symbolizing the fleeting yet luminous nature of memory.

A functioning downpipe generates ripples that echo rain-fed currents. Surrounded by water and water plants, three mini gardens rest within the sailboat, accessible by stepping stones. In its modest scale, the garden invites visitors to pause, reflect, and reconnect with the wonder of childhood shaped by rain and imagination.



Nanyang Inc 南洋  
Since 1965



# Floral Windows to the World Championship

## Live Competition 4 – 6 July

Floral Windows to the World Championship (FWWC) returns with a dynamic new format that brings world-class floral artistry to life through an exciting live competition. Seventeen international floral masters will compete across six elimination rounds over three days, creating striking floral works under pressure before a live audience. The competition will culminate in the finals held during a gala dinner where one Grand Champion will be crowned. All visitors to the Singapore Garden Festival can watch the live competition, while a ticket to the Championship finals dinner is required to view the finals.



## Competitors



**Matthew Landers**  
Australia



**AKuang**  
China



**Rafaela Petrinic**  
Croatia



**Marek Jakobi**  
Estonia



**Pirjo Koppi**  
Finland



**Anja Ersing**  
Germany



**Attila Nemeth**  
Hungary



**Tinna Bjarnadottir**  
Iceland



**Kazuhiko Tanaka**  
Japan



**Win Chan**  
Malaysia



**Franca Logan**  
New Zealand



**Joanna Kiedacz**  
Poland



**Oh Myeon**  
Republic of Korea



**Keith Lin**  
Singapore



**Geertje Stienstra**  
The Netherlands



**Eric Schellack**  
United States  
of America



**To Duy Kha**  
Vietnam

# Your Brand,



## Our Network.

STELLAR  
*Ace*



Every Street, Every Screen, Islandwide  
[www.stellarace.com.sg](http://www.stellarace.com.sg)

My Living Space

## M01 - THE QUIET SPACE BETWEEN

Designer  
Zenjiro Hashimoto  
SUGURU INC Pte Ltd

### Concept

Between light and shadow, inside and outside, presence and absence, a quiet interval emerges.

Rather than adding more nature, this display creates a space where nature can be felt.

Soft light filters through, casting shifting shadows that reveal the passage of time, while moments of stillness invite reflection.

The boundary between architecture and garden dissolves, forming a continuous field for living.

Defined not by objects but by the space in between, it offers a restrained yet sensory environment, where a quieter, more intimate way of living with nature is rediscovered.

My Living Space

## M02 - THRESHOLDS OF STILLNESS: A CONTEMPLATIVE REFUGE FOR PRESENCE, RITUAL AND RENEWAL.

Designer  
Tan Jing Xiang  
Earthscape Concepts Pte Ltd

### Concept

Designed as a private sanctuary for two, this balcony garden offers a calm setting for reflection, intimacy, and spiritual renewal. Timber screens frame the space as quiet thresholds, creating a gentle passage from everyday living into retreat.

Lush tropical planting softens the city beyond, while water, warm light, and natural textures invite stillness. The circular rug and low table form a grounded centre for tea, conversation, meditation, or simple rituals. Set against the skyline, the space becomes both shelter and horizon: a place to withdraw from noise, reconnect with nature, and continue shaping a meaningful life together.

## My Living Space M03 - PEACE

Designer  
**Vincent Chia**  
Tropic Planners & Landscape  
Pte Ltd

### Concept

An inner self within the home. Natural materials, filtered light, and breathable spatial flow create a restorative environment that nurtures both mind and body. At its heart lies "a garden within" – an intimate, immersive refuge seamlessly integrated into daily life. An active and creative mind finds beauty and freedom with the ease of care, while the space evolves with its inhabitants, offering a living, breathing expression of urban wellbeing.

## My Living Space M04 - A HOME FULL OF LIFE

Designer  
**Pham Le Anh**  
Baya Weaver Studio Pte Ltd

### Concept

"If children don't grow up knowing about nature and appreciating it, they will not understand it. And if they don't understand it, they won't protect it. And if they don't protect it, who will?"

David Attenborough

Curated as a home for children to observe and care for nature, this space invites them to "watch" a vivarium instead of TV, read from a tree-shaped bookshelf, climb a jungle gym, and sit among furniture crafted from locally felled trees. Inspired by mangrove habitats, the paludarium and balcony planter feature aquatic and terrestrial environments, including marginal plants, biodiversity-attracting shrubs, and birdhouses. The children might witness hatchlings emerging from a nest or butterflies unfurling from chrysalides.

## My Living Space M05 - QUIETUDE BEYOND WILDERNESS

Designers  
**Mukta Kasturia & Lim Yn Sheao**  
National Parks Board

### Concept

Cross the threshold and the city falls away – into a living sanctuary where colourful begonias, beautiful orchids, bold aroids and cascading ferns recreate the tranquil depth of a forest understory, and the gentle sound of water quietly washes the urban rush away.

Inspired by the quiet wisdom of Japanese meditation gardens, the space is thoughtfully layered with plants, textures, colours, fragrance, light and the sound of water, each deeply rooted in our instinctive connection to nature. Focal points and pause points gently guide the senses inward; the mind slows, and a deep, quiet calm is restored.

Designed to inspire everyday living, each element works quietly in the background, restoring energy and calming the mind. This is Singapore's City in Nature vision at its most personal, bringing nature closer, every single day.

**The Garden's  
best-kept secret  
is here.**

A fresh leaf unfurling,  
or a corner that feels a little brighter.  
Small reasons to smile,  
that's what we are here for.

**Noi  
Gardens**

Routed In Joy

Visit our  
MarketPlace  
Booth at  
**F1**

noi-gardens.com | 230 New Tiew Cres S718819 | +6588935336 | @noigardens

# Orchid Extravaganza

Rhythm of the Rainforest



## ORCHID EXTRAVAGANZA & SINGAPORE ORCHID SHOW @ FLOWER DOME

This year, Orchid Extravaganza spotlights the rich heritage and diversity across seven regions of Indonesia. Featuring more than 7,000 orchids, including native species and varieties, it is presented in partnership with the Ministry of Creative Economy of Indonesia and the Embassy of the Republic of Indonesia in Singapore. Striking woven artworks and larger-than-life sculptural pieces using the traditional anyaman weaving technique with coconut leaves and bamboo are featured alongside architectural recreations of traditional Sumbanese houses with their soaring roofs and multi-tiered Balinese Meru towers. Cultural motifs, including bold Toba Batak patterns and intricate ikat designs, reflect the stories, beliefs and craftsmanship across the Indonesian archipelago.

Orchid Extravaganza is held in conjunction with Singapore Garden Festival 2026 and runs from 3 July to 10 August 2026 in the Flower Dome.

For a limited time from 4 to 12 July, visitors can also look forward to an exquisite showcase of prized orchids from the Singapore Orchid Show organised by the Orchid Society of South East Asia (OSSEA).

Gardens Shop  
Singapore Botanic Gardens

# SINGAPORE GARDEN FESTIVAL EXCLUSIVES

Souvenirs with special offers



# 50

RISIS



### RISIS Jubilee Orchid Showcase

Celebrate 50 Years of RISIS with the Jubilee Capsule Series and an exclusive showcase of rare Orchid breeds presented to distinguished dignitaries since 1976, including the late Her Majesty Queen Elizabeth II.

Receive a limited-edition recyclable bag with any purchase.

Visit us at The Meadow, Gardens by the Bay 2026



SINGAPORE GARDEN FESTIVAL  
10<sup>th</sup> Edition

## General Display

# SGC01 – SGC03 SINGAPORE GARDENERS' CUP

The Singapore Gardeners' Cup returns for its eighth edition, bringing together passionate community gardeners in a celebration of green creativity.

Thirty-six Community in Bloom gardening groups have partnered with the National Parks Board (NParks) and implementing partners to create three distinctive display plots. This year's "Vintage Carnival" theme showcases tropical plants in enchanting displays that blend sustainability, cultural heritage, and visual appeal.

These are far from ordinary garden displays – they are photo-worthy creations that demonstrate how community groups can reimagine green spaces. The displays support NParks' vision of transforming Singapore into a City in Nature through collaborative gardening efforts.

Feeling inspired by these community gardeners? Ready to start your own gardening adventure? Scan the QR code and explore the GardeningSG website to begin your gardening journey today!



<https://go.govsg/gardeningsg>

# LDC01 – LDC08 LANDSCAPE DESIGN CHALLENGE

The Landscape Design Challenge (LDC) is where young horticultural talent meets creative vision. Students from our local Institutes of Higher Learning took part in a live competition on 4 July 2026, showcasing their skills in landscape design and plant selection as they competed alongside their peers to bring bold, imaginative spaces to life.

Given just four hours, participants from the Institute of Technical Education (College East), Nanyang Academy of Fine Arts, Ngee Ann Polytechnic, Republic Polytechnic, and Singapore Polytechnic implemented these landscape displays inspired by the theme "Retro Reimagined".

Take a stroll through their creations and discover how the next generation of landscape designers puts a fresh spin on the landscapes of yesteryear.

# G01 SINGAPORE GARDENING SOCIETY

The Singapore Gardening Society, National Parks Board, Singapore Botanic Gardens and Gardens by the Bay welcome visitors to step into a celebration of nine decades of horticultural passion. The Society aims to encourage gardening among the public from all walks of life, across all ages and races.

Dressed in diamond white and rich, deep hues befitting this diamond anniversary, the display pays tribute to the Society's most cherished figures. Look out for *Platyserium holttumii*, named in honour of founding member and former Singapore Botanic Gardens Director Richard Eric Holttum, and *Syzygium jiewhoei*, honouring immediate past president Tan Jiew Hoe. Also on display is the orchid hybrid *Renantanda* Singapore Gardening Society, lovingly created to mark the Society's 80th anniversary – a living thread connecting past and present.

We thank the National Parks Board and the Singapore Botanic Gardens for their support.

# G02 PENJING AND ARTISTIC STONE EXHIBITION AND COMPETITION 2026

Presented by the Singapore Penjing and Stone Appreciation Society, this exhibition celebrates the art of bonsai. Discover over 120 carefully curated pieces, including tropical bonsai species lovingly cultivated by local enthusiasts over decades, alongside landscape penjing, artistic stones, and antique pots. Whether you are a seasoned collector or simply curious about the natural world, this is a rare opportunity to appreciate the quiet artistry of trees in miniature, and perhaps find inspiration to begin your own journey.



# YOUR BRAND BIGGER THAN EVER

Reach thousands every day with strategic OOH advertising placements that make your advertisement impossible to ignore.



Exclusive Media Owner of:

**TEL** Thomson-East Coast Line

✉ info@asiaray.sg

☎ +65 8813 3545



Follow us on  
**LinkedIn**



## G03 14TH INTERNATIONAL FDSS CUP FLORAL DESIGNING COMPETITION 2026

Floral Designers Society Singapore (FDSS) proudly presents the 14th edition of its international floral designing competition, with the theme "The Elements of Design." The competition celebrates the fundamental principles that define exceptional floral artistry, bringing together talented designers from around the world.

Held in conjunction with the Singapore Garden Festival, the live competition rounds will take place on 4 July 2026 and 8 July 2026. Competition pieces will be on display from 4 to 12 July 2026.

| Category     | Activity   |
|--------------|--|
| Amateur      | <p>Live competition - Saturday 4 July 2026, 10am to 1pm</p> <p>Amateur competitors will create two designs:<br/>1. "Texture Talks" Free Standing Display<br/>2. Surprise Package</p> <p>Competition works from the Amateur category will be on display from 4 to 7 July 2026.</p>  |
| Professional | <p>Live competition - Wednesday 8 July 2026, 10am to 3:30pm</p> <p>Professional competitors will create three designs:<br/>1. "Lines of Beauty" Free Standing Display<br/>2. "Dynamism in Contrast" Hand Tied Bouquet<br/>3. Surprise Package</p> <p>Competition works from the Professional category will be on display from 8 to 12 July 2026.</p> |

## G04

# 165 YEARS IN BLOOM: A STORY OF SINGAPORE'S GARDEN SHOWS

Singapore's garden show story stretches back to 1861, when Singapore held its very first flower show on the Esplanade, organised by the Singapore Botanic Gardens. This exhibition traces the story, from its earliest roots to the Singapore Garden Festival of today.

Through archival photographs, historical records, and key milestones, the exhibition charts how Singapore's flower and garden shows have always moved in step with the nation.

In the colonial era, they encouraged residents to cultivate the land. After independence, they became instruments of nation-building, championing Singapore's identity as a Garden City. In the high-rise decades, they brought greenery into homes. And today, they celebrate Singapore's vision as a City in Nature.

In 2006, the Singapore Garden Festival marked a new chapter – boldly raising the bar for Singapore's garden show tradition and announcing Singapore's arrival on the world stage. Over ten editions, it has grown into one of the top three flower shows in the world, bringing together internationally acclaimed designers and nurturing local horticultural talent. The tradition runs deep. Knowing where it comes from only deepens the experience of visiting the festival today.

## G05

# FLORAL ROLLER COASTER

Implemented by  
**Jeremy Yeo, Sarah Dendroff,  
Sarah Othman, Mabel Chung,  
Andi Mutmainnah**

**National Parks Board**

Fasten your seatbelts – this roller coaster is about to take you on a breathtaking ride through a tropical paradise like no other!

Everywhere you look, there is something to discover – towering trees and palms forming a dramatic canopy above, and all around, vibrant blooms, striking foliage, and extraordinary inflorescence in every colour, form, and texture imaginable. From the peak of the roller coaster to the ground at your feet, every layer of this landscape has been crafted to surprise and delight at every turn.

Together, these remarkable plants form a living kaleidoscope – a joyful celebration of tropical biodiversity at its most spectacular. Every twist and turn reveals something new: a flash of unexpected colour, an extraordinary form, a texture that simply begs a closer look.

Welcome to the Carnival of Blooms, where nature puts on its most dazzling show. Hold on tight – the ride has only just begun!

## G06

# NATURE'S CAROUSEL PLAY GARDEN

Implemented by  
**Mohd Shairazi Idris, Nur  
Syuhada Limat, Jolene Lim,  
Leong Fong Feng, Christian  
Choo**

**National Parks Board**

Welcome to *Nature's Carousel Play Garden*, where the timeless magic of a traditional carousel comes alive through natural elements and imaginative play. This unique garden transforms the classic fairground experience into an enchanting outdoor adventure, designed to spark wonder and creativity in visitors of all ages.

The garden's design revolves around a majestic central tree that forms a natural carousel column, surrounded by carefully positioned tree trunks that echo the vertical posts of a spinning carousel. Journeying through the space, you will discover log play elements thoughtfully crafted to resemble Singapore's native animals – from mysterious owls and majestic hornbills to gentle pangolins.

Start your adventure with a gentle ascent up our meadowy hill, where soft grasses cushion each step and create a sense of anticipation. The path then opens into an intimate floral garden setting, culminating in a spectacular burst of vibrant colours surrounding our central tree sculpture – nature's own grand finale.

## G07

# SILVER GARDEN

Implemented by  
**Jolene Lim, Leong Fong Feng**

**National Parks Board**

Step into a world of silver. The soft, silvery tones provide an elegant and contemporary visual backdrop, allowing surrounding greenery and flowering plants to stand out with greater vibrancy and contrast.

This silvery appearance of the foliage is typically due to tiny reflective hairs known as trichomes, or waxy coatings on the leaves. Trichomes help to deflect intense sunlight and reduce water loss. These adaptations enable many silver-leaved species to thrive in hot, dry environments, as they are highly drought tolerant and well suited to full sun conditions.

Many silver-leaved plants originate from Mediterranean regions, where harsh environmental conditions have shaped their adaptations over time. Beyond their aesthetic appeal, these resilient plants generally require low maintenance and contribute to a landscape that is attractive and sustainable.

## G08 SUNKISSED: A CELEBRATION OF SUNFLOWERS

Implemented by  
**Jolyn Tan, Jolene Sim, Vicky Lim,  
Chia Hui Tong**

**National Parks Board**

Sunflowers are named for their bright yellow flowers that resemble the sun, and their remarkable ability to turn and follow the sun across the sky – a behaviour called heliotropism. These cheerful flowers can range from compact 30-centimetre varieties to towering 4-metre specimens.

Originally from the Americas, sunflowers have been cultivated for over 4,000 years and are now grown globally. Beyond their beauty, they provide valuable birdseed, cooking oil, and serve as sustainable crops that improve soil health. Their nutrient-rich seeds offer essential food for wildlife, especially migratory birds.

The development of sunflower varieties represents a fascinating blend of art and science spanning millennia. Breeders create new varieties through careful cross-pollination, selecting desired traits such as giant blooms and unique colours. Today's DNA marker technology has accelerated this traditionally 8 to 12-year breeding process, efficiently combining beneficial characteristics into remarkable new varieties.

Look at the display in front of you – how many varieties can you spot?

## G09 WILDFLOWER MEADOW

Implemented by  
**Jolyn Tan, Jolene Sim**

**National Parks Board**

Wildflower meadows are vibrant ecosystems with diverse communities of flowering plants, grasses, and herbs. They form naturally in low-nutrient, sunny environments where harsh conditions prevent woody shrubs and trees from dominating. They also develop through centuries of traditional farming practices.

Wildflower meadows vary dramatically across different environments. Wet meadows near rivers host marsh marigolds, upland meadows feature hardy alpine flowers, whilst coastal meadows contain salt-tolerant species, each showcasing distinct plants perfectly adapted to local conditions.

Meadows support extraordinary biodiversity. The variety of plants provides nectar and pollen for bees and butterflies, seeds for birds, and shelter for small mammals, creating complex food webs within a single habitat. The meadow in front of you features our interpretation of a temperate wildflower meadow, with a tropical twist. Today, wildflower meadows are one of the most threatened habitats in the world. Protecting these spaces will support native plants and wildlife dependent on them.

## G10 FRUIT ORCHARD

Implemented by  
**Jolyn Tan, Jolene Sim, Joan  
Hung, Chia Hui Tong**

**National Parks Board**

The world is connected by fruits. In our daily lives, we consume fruits that originate from all over the world: coffee (*Coffea arabica*) from Africa in the morning, chilli (*Capsicum annuum*) from the Americas to spice up lunch, and a slice of orange (*Citrus × sinensis*) from China for dessert. These fruits were once traded through long, dangerous routes to reach new lands, but have become commonplace in our daily lives today.

Journey through four zones, tracing the footsteps of ancient travellers as they discovered each area's specialties – from citruses (*Citrus spp.*) in the Old World, pomegranates (*Punica granatum*) along the Silk Road, to papayas (*Carica papaya*) in the New World, each showcasing unique fruits from its region. Meet in the middle at the Mediterranean dome, where fruits like figs (*Ficus carica*) reveal cultural significance shared across civilisations.

Discover how fruits have carried flavours, cultures, and stories, transforming from local produce into global connections.

## G11 FLORAL VORTEX

Implemented by  
**Jeremy Yeo, Sarah Dendroff,  
Sarah Othman, Mabel Chung,  
Andi Mutmainnah**

**National Parks Board**

Step into the *Floral Vortex* and be transported to a whimsical world of colourful blooms and lush foliage. Be immersed in sweeping arches of orchids in a dynamic array of colours and forms, framed by soft greenery. Be hypnotised by the swirl of nature's paintbrush waiting to be explored.

Through each arch, the warmth of yellow oncidiums complements the gentle hues of dendrobiums, contrasting the boldly coloured blooms of the Vandaceous orchids, speckled throughout the vortex. A splash of green provides the perfect foundation to enjoy the spectacular orchids.

This harmonious blend of trees, plants, and flowers forms a captivating display that is as rewarding up close as it is from afar. Every angle reveals a new layer of colour, texture, and form – from the delicate detail of a single orchid bloom to the grandeur of the arches. Take a breath, pause, observe, and lose yourself in its beauty.

## G12 FRAMED BY NATURE

Implemented by  
**Rockney Wong, Shawn Ng**

**National Parks Board**

Step into the heart of Singapore's rich biodiversity with these interactive Face-in-a-Hole photo backdrops, each themed around a unique habitat – Park, Forest, and Coast. Immerse yourself in these living landscapes, framed by plants that capture the character and feel of each environment.

Cheerful blooms and lively greenery reflect the vibrancy of our urban parks. Layered textures of trees, shrubs, and understorey plants evoke a sense of discovery found within tropical woodlands. Sun-loving and hardy seaside vegetation mirror the resilience and breezy charm of plants that thrive along the coast.

Designed to spark joy and curiosity, these playful floral displays celebrate the fun of exploration and learning, allowing you to discover the forms, textures, and colours of our local plants while capturing a unique portrait of your journey.

## G13 SENSORY GARDEN: FOREST OF SWEET DELIGHTS

Supported by



Implemented by  
**Vanessa Preechakul, Rockney Wong, Ng Ting Yu, Shawn Ng, Jerome Koh, Elaine Lork**

**National Parks Board**

Welcome to the Forest of Sweet Delights, where vintage carnival magic meets botanical wonder. Inspired by enchanting confectionery stalls in carnivals, this sensory garden transforms nature into an immersive candy shop within an enchanted forest.

Engage in a multi-sensory educational journey of discovery through nature. Be fascinated by the thriving colourful foliage and spectacular flowers in the welcoming foyer. Wander along the meandering path where the waterscape's soothing symphony reveals the diversity of tropical and aquatic life. The confectionery-themed spaces feature thoughtfully designed architectural elements that showcase delightfully scented plants, creating multiple layers of sensory experience. From sweet blossoms and citrus fruits to earthy herbs and other edibles, each element invites you to touch, smell, taste, and discover the wonders of nature.

## G14 FLORAL MIRROR MAZE

Implemented by  
**Rockney Wong, Pearl Ho, Jerome Koh, Cherish Yong, Dr Jana Skornickova, Kee Kai Ying**

**National Parks Board**

Step into a mystical journey where botanical science meets artistic wonder.

Eight uniquely designed chandeliers suspend from an open canopy, each featuring living orchids, creepers, and cascading Spanish moss interwoven with harvested flowers pressed by the Singapore Herbarium – a cornerstone of efforts to collect, document, and conserve our region's flora. Each chandelier captures the timeless beauty of plants, from living blooms to botanical specimens preserved in time, celebrating both the vitality and fragility of plant life alongside botanical heritage conserved for future generations.

Mirrors lining both sides of the maze amplify the visual drama, creating infinite reflections that blur the boundaries between reality and illusion – evoking curiosity and delightful disorientation as visitors navigate the winding pathways.

This fusion of life and timeless preservation transforms traditional garden exploration into an immersive experience, inviting visitors to lose themselves in a world where art and nature converge in harmony.

## G15 FLORAL INFINITY MIRROR

Implemented by  
**Rockney Wong, Zaki Jamil**

**National Parks Board**

Step into a world where colour knows no bounds. This immersive walkway transforms tropical foliage into a dynamic spectacle, where every surface comes alive through light, colour, and infinite reflection.

Featuring a curated selection of vividly coloured plants, the display celebrates tropical foliage in its most expressive forms. Splashes of crimson, purple, yellow, lime, and deep green cascade across leaves of every shape and size, creating a rich and vibrant tapestry.

Mirror-clad walls stretch this tropical beauty into infinity. Plants appear to extend endlessly in all directions, creating a living kaleidoscope that shifts with your steps. The interplay of light, colour and reflection evokes the sensory richness of a carnival, reimagined through nature.

This is an invitation to see tropical foliage not as mere backdrop, but as the star of the show. In *Flora Infinity Mirror*, colour takes centre stage and nature reveals itself in infinite splendour.

## G16 TENT OF EDIBLE CURIOSITIES

Designed by  
**Lok Yan Ling**

Implemented by  
**HortPark team with Dr Wilson  
Wong, Vicky Lim Yen Ngoh**

National Parks Board

For the wide-eyed, the wondering, and the delightfully curious – beyond these canvas walls lies the most marvellous collection of edible wonders ever assembled. Feast your eyes on the extraordinary homegrown harvests, including entries from our Community Garden Edibles Competition, nestled amongst the various carnival booths within this tent and uncover surprising facts about the edible world.

Pit your might against the boldest fruits and vegetables at the Strongman Booth, stop by the Travelling Puppet Theatre to discover a miniature stage set brought to life with edible plants, let the Fortune Teller unveil the secrets that lie within every edible plant part, and explore a dazzling array of wonders at every turn.

Feed your curiosity, leave nourished.

## G17 SG CADEX COMPETITION AND SHOWCASE

SG Caudex Competition, co-organised by Planters Market & Cutepplantsworld, brings together collectors and enthusiasts to present a curated lineup of the finest caudiciforms, all staged with creativity and paired with the finest pottery for Singapore Garden Festival 2026.

Be sure to spot the rarest amongst more than 40 entrants from the families of Apocynaceae, Anacardiaceae, Burseraceae, Euphorbiaceae, Vitaceae, and other oddities in this competition! And be inspired by the various growers who are, in their own right, artists who have transformed the rare and peculiar into living art pieces through years of experience, experiments, and knowledge.

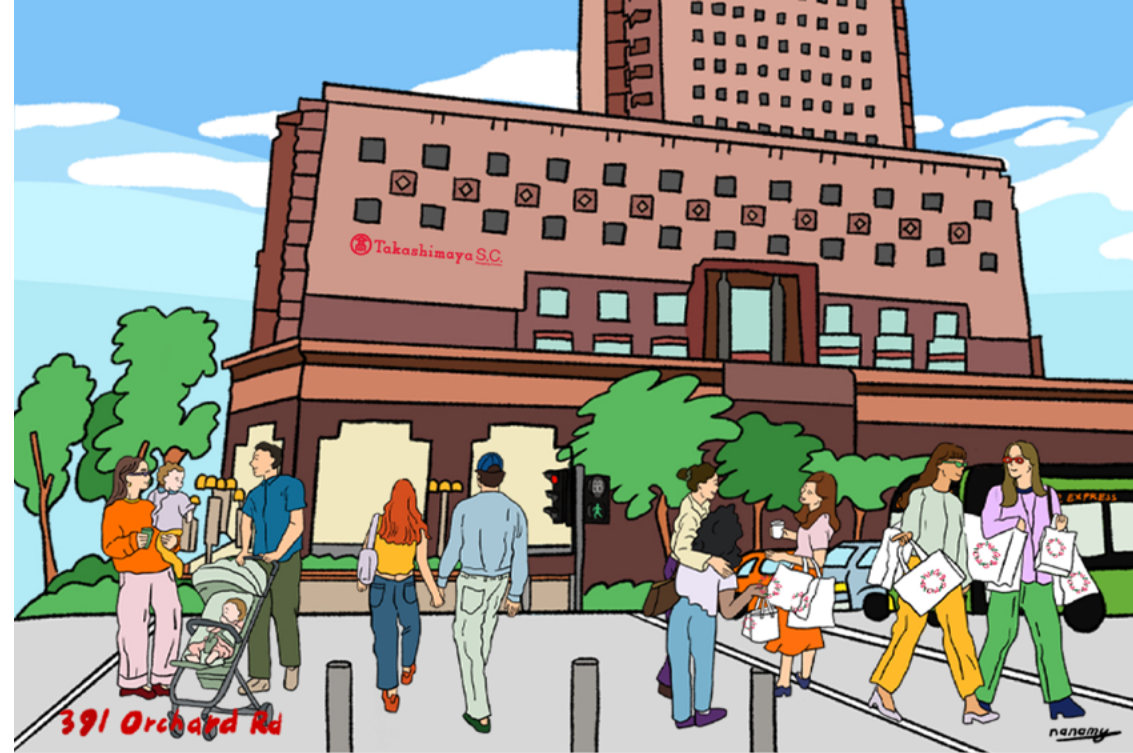
## G18 KNOWN BY FLOWERS

Designed by  
**Shiyang Hu (China),  
YiXiang Studio**

*Known by Flowers* is an interactive light art installation that celebrates nature and its magical beauty. It aims to evoke emotional resonance through the captivating charm of flowers and their seemingly spontaneous design. Ripples of sunlight and clouds cradle dreams nestled among the blossoms, while blooming flowers surround and embrace us.

As the scale between flowers and visitors shifts, the perspective of appreciating flowers transforms accordingly. One's mood and state of mind also change, giving rise to distinctive sensory experiences and thoughtful reflections. A flower may bloom for only a single day, but nature will ultimately outlast us all. We observe nature, and nature, in return, knows us.

The flowers are gentle, yet no longer fragile. Feel free to touch, listen, and interact as you immerse yourself in the moment.



**FRI 12 JUN TO MON 10 AUG 2026**

# Holiday Special

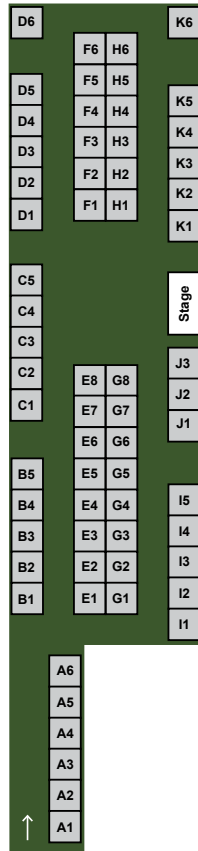
Turn Your Shopping Trip  
into a Stamp Adventure!

 **Takashimaya** SINGAPORE  
Together dreams come true 

# PLANTERS MARKET x SGF 2026 MARKETPLACE

Organised in partnership with Planters Market, the MarketPlace offers visitors a delightful shopping experience featuring a curated selection of retailers showcasing plants, gardening wares, collectibles, and more. Home gardening enthusiasts will discover all the essentials they need to nurture their green spaces. Admission to the MarketPlace is free.

| Free Admission |  |
|----------------|--|
| Date           | 4 to 12 July 2026  |
| Time           | 10am - 8pm   |
| Location       | Gardens by the Bay, Bayfront Green<br>(Next to Bayfront MRT) |



## Planters Market x SGF 2026 MarketPlace

### Exhibitors from 4 – 7 July 2026

| Booth Number | Booth Name                                      |
|--------------|---|
| <b>A1</b>    | KAMPUNG FIELD + UNIQUEGARDEN. TH                |
| <b>A2</b>    | HONG MEI GARDEN                                 |
| <b>A3</b>    | BLACK TOE TROPICALS                             |
| <b>A4</b>    | SINGAPORE CARNIVOROUS PLANTS                    |
| <b>A5</b>    | CUTEPLANTSWORLD                                 |
| <b>A6</b>    | TUM GARDEN                                      |
| <hr/>        |   |
| <b>B1</b>    | LITTLE ONE PLANT NURSERY                        |
| <b>B2</b>    | PEPPER PATCH SG                                 |
| <b>B3</b>    | ORCHID SOCIETY OF SOUTH EAST ASIA (OSSEA)       |
| <b>B4</b>    | PLANTLAND X SITA                                |
| <b>B5</b>    | JB ORCHID NURSERY                               |
| <hr/>        |   |
| <b>C1</b>    | LEE HENG GARDEN SERVICES / LAI SENG NURSERY     |
| <b>C2</b>    | LEE HENG GARDEN SERVICES / LAI SENG NURSERY     |
| <b>C3</b>    | POLYDECK COMPOSITES                             |
| <b>C4</b>    | PLANT & PLANT                                   |
| <b>C5</b>    | CRAFTED IDENTITY                                |
| <hr/>        |   |
| <b>D1</b>    | PLANTSMAN                                       |
| <b>D2</b>    | PANCY PLANTS CORNER                             |
| <b>D3</b>    | AMOS LEARNS TO PLANT                            |
| <b>D4</b>    | BUTMOSTLYPLANTS                                 |
| <b>D5</b>    | BUTMOSTLYPLANTS                                 |
| <b>D6</b>    | CHYE HENG                                       |
| <hr/>        |   |
| <b>E1</b>    | VARIEGATED ZONE THAILAND                        |
| <b>E2</b>    | EVERVIEW LANDSCAPE / LIVING WATER RESOURCES     |
| <b>E3</b>    | EVERVIEW LANDSCAPE / LIVING WATER RESOURCES     |
| <b>E4</b>    | POMPIPLANTS / CHIOS SOLUTION                    |
| <b>E5</b>    | THE 3 KEYS / 山上有树                               |
| <b>E6</b>    | WASSANA ORCHIDS                                 |
| <b>E7</b>    | SUNRISE EVENTS & PRODUCTIONS PTE LTD            |
| <b>E8</b>    | JUNGLE ART MALAYSIA / FORESTA ORCHIDS INDONESIA |
| <hr/>        |   |
| <b>F1</b>    | NOI GARDENS                                     |
| <b>F2</b>    | BELA VISTA ORCHIDS / HACHINOHE ORCHIDS          |
| <b>F3</b>    | TAIWAN SCISSORS                                 |
| <b>F4</b>    | TAIWAN SCISSORS                                 |
| <b>F5</b>    | JAIRAK ORCHID THAILAND                          |
| <b>F6</b>    | NKH ., NAKHON TILLANDSIA                        |

A

B

C

D

E

F

## Exhibitors from 8 – 12 July 2026

| Booth Number | Booth Name                               |
|--------------|--|
| <b>G</b>     |  |
| <b>G1</b>    | GARDEN PARADISE SINGAPORE (GPS)          |
| <b>G2</b>    | WOON LENG NURSERY PTE LTD                |
| <b>G3</b>    | KOKKOK ORCHID                            |
| <b>G4</b>    | JOE MAM ORCHID                           |
| <b>G5</b>    | GREEN GROWER MALAYSIA                    |
| <b>G6</b>    | GREEN GROWER MALAYSIA                    |
| <b>G7</b>    | SUN MOON ORCHIDS, INC.                   |
| <b>G8</b>    | SUN MOON ORCHIDS, INC.                   |
| <b>H</b>     |  |
| <b>H1</b>    | NEO CHENG SOON FARM                      |
| <b>H2</b>    | KOKKOK ORCHID / KOY ORCHID               |
| <b>H3</b>    | TROPICAL EXOTIQUE THAILAND               |
| <b>H4</b>    | TROPICAL EXOTIQUE THAILAND               |
| <b>H5</b>    | NEW JOO GUAN NURSERY                     |
| <b>H6</b>    | THE SOURSOP LADY                         |
| <b>I</b>     |  |
| <b>I1</b>    | FOLIAGE PARADISE .SG                     |
| <b>I2</b>    | ECUAGENERA                               |
| <b>I3</b>    | TOH GARDEN                               |
| <b>I4</b>    | ADIANTUM TIME / PN GARDEN / FOLIANGLE 宅裁 |
| <b>I5</b>    | THE REWILDING CO.                        |
| <b>J</b>     |  |
| <b>J1</b>    | GREENDOT CREATIONS                       |
| <b>J2</b>    | GREENDOT CREATIONS                       |
| <b>J3</b>    | ORCHID HOYA SG                           |
| <b>K</b>     |  |
| <b>K1</b>    | TUNG CHIN ORCHID NURSERY TAIWAN          |
| <b>K2</b>    | ORCHID FLORICULTURING INC. TAIWAN        |
| <b>K3</b>    | PLANTERSAURUS SG / EPIVERA TAIWAN        |
| <b>K4</b>    | SYNCOLLECTIVE                            |
| <b>K5</b>    | CHATUCHAK MARKET PLANT (CMP)             |
| <b>K6</b>    | GREENFINGERS SG AND THE GREEN CURATE     |

| Booth Number | Booth Name   |
|--------------|--|
| <b>A</b>     |  |
| <b>A1</b>    | SOMETIME PLANTS THAILAND / MYSTIQUE TROPICALS CAMBODIA |
| <b>A2</b>    | HONG MEI GARDEN  |
| <b>A3</b>    | ENRICH GARDEN THAILAND                                 |
| <b>A4</b>    | TEN SHIN GARDENS                                       |
| <b>A5</b>    | TOYAMA HAMONO JAPAN                                    |
| <b>A6</b>    | K-FARM   |
| <b>B</b>     |  |
| <b>B1</b>    | LITTLE ONE PLANT NURSERY                               |
| <b>B2</b>    | EDEN GARDEN SUPPLY                                     |
| <b>B3</b>    | EDEN GARDEN SUPPLY                                     |
| <b>B4</b>    | PLANTLAND X SITA                                       |
| <b>B5</b>    | JB ORCHID NURSERY                                      |
| <b>C</b>     |  |
| <b>C1</b>    | LEE HENG GARDEN SERVICES / LAI SENG NURSERY            |
| <b>C2</b>    | LEE HENG GARDEN SERVICES / LAI SENG NURSERY            |
| <b>C3</b>    | POLYDECK COMPOSITES                                    |
| <b>C4</b>    | PLANT & PLANT  |
| <b>C5</b>    | FOREST CHAMBER   |
| <b>D</b>     |  |
| <b>D1</b>    | CHIAM GARDEN   |
| <b>D2</b>    | AZAA GARDEN / AMPLIFIED CACTUS                         |
| <b>D3</b>    | CHAIYO FARM SINGAPORE                                  |
| <b>D4</b>    | JOSEPH WU ORCHIDS                                      |
| <b>D5</b>    | COMVITA - NATURAL HEALTH & WELLNESS                    |
| <b>D6</b>    | CHYE HENG  |
| <b>E</b>     |  |
| <b>E1</b>    | MY FIRST PLANTS THAILAND                               |
| <b>E2</b>    | EVERVIEW LANDSCAPE / LIVING WATER RESOURCES            |
| <b>E3</b>    | EVERVIEW LANDSCAPE / LIVING WATER RESOURCES            |
| <b>E4</b>    | THE PLANT PEOPLE                                       |
| <b>E5</b>    | THE 3 KEYS / 山上有树                                      |
| <b>E6</b>    | WASSANA ORCHIDS  |
| <b>E7</b>    | HOKAS GARDEN TOOLS                                     |
| <b>E8</b>    | JUNGLE ART MALAYSIA / FORESTA ORCHIDS INDONESIA        |
| <b>F</b>     |  |
| <b>F1</b>    | NOI GARDENS  |
| <b>F2</b>    | CHING HUA ORCHIDS                                      |
| <b>F3</b>    | TAIWAN SCISSORS  |
| <b>F4</b>    | TAIWAN SCISSORS  |
| <b>F5</b>    | MY DEAR PLANT THAILAND                                 |
| <b>F6</b>    | NKH ., NAKHON TILLANDSIA                               |

# ACKNOWLEDGEMENTS

We thank our Sponsors

## Platinum Sponsors



Official MarketPlace  
Partner



Official Hotel  
Partner



Official Hydration  
Partner



## Gold Sponsors



## Bronze Sponsors



## Supporting Sponsors

Daikin Singapore  
ecoBrown's  
Mamee Monster  
Marginpar  
OATSIDE  
Three Legs Brand

| Booth Number | Booth Name                           |
|--------------|--------------------------------------|
| G1           | GARDEN PARADISE SINGAPORE (GPS)      |
| G2           | WOON LENG NURSERY PTE LTD            |
| G3           | KOKKOK ORCHID                        |
| G4           | JOE MAM ORCHID                       |
| G5           | GREEN GROWER MALAYSIA                |
| G6           | GREEN GROWER MALAYSIA                |
| G7           | SUN MOON ORCHIDS INC                 |
| G8           | SUN MOON ORCHIDS INC                 |
| <hr/>        |                                      |
| H1           | NEO CHENG SOON FARM                  |
| H2           | KOKKOK ORCHID / KOY ORCHID           |
| H3           | TROPICAL EXOTIQUE THAILAND           |
| H4           | TROPICAL EXOTIQUE THAILAND           |
| H5           | NEW JOO GUAN NURSERY                 |
| H6           | THE SOURSOP LADY                     |
| <hr/>        |                                      |
| I1           | SUNRISE EVENTS & PRODUCTIONS PTE LTD |
| I2           | GARDENS BY THE BAY                   |
| I3           | RESORTS WORLD AWANA                  |
| I4           | POMPIPLANTS / CHIOS SOLUTION         |
| I5           | THE BOTANICAL ASSEMBLY               |
| <hr/>        |                                      |
| J1           | GREENDOT CREATIONS                   |
| J2           | GREENDOT CREATIONS                   |
| J3           | ORCHID HOYA SG                       |
| <hr/>        |                                      |
| K1           | TUNG CHIN ORCHID NURSERY TAIWAN      |
| K2           | ORCHID FLORICULTURING INC. TAIWAN    |
| K3           | MORE FARM X FLOWER WITH FEELING      |
| K4           | SYNCOLLECTIVE                        |
| K5           | CHATUCHAK MARKET PLANT (CMP)         |
| K6           | GREENFINGERSSG AND THE GREEN CURATE  |

G

H

I

J

K

Supporting Partners



Experience  
Real Mānuka

The World's  
No. 1 UMF™  
Level Guaranteed  
Mānuka Honey

Honey that keeps its healing power,  
from first drop to the last



Visit Comvita  
Gardens by the Bay  
MarketPlace, Booth D5

8 - 12 JULY



REHYDRATE YOUR  
FEELINGS WITH  
HIMALAYA SPORTS CANDY



Pan Pacific Singapore  
Commemorates 40 Years  
of Hospitality Excellence

*Sincerely Yours*



Experience a distinguished welcome at Pan Pacific Singapore, an iconic hotel in the Marina Bay precinct. Since opening its doors in 1986 as one of Singapore's pioneering luxury hotels, Pan Pacific Singapore has remained a prominent landmark in the city's skyline.

To commemorate this milestone, the hotel presents a curated series of experiences, from indulgent dining and rejuvenating spa treatments to luxurious staycations, such as the exclusive "40th Anniversary Stay Package". Indulge in a one-night room stay for two persons with breakfast at the award-winning buffet restaurant, Edge, and enjoy a welcome drink at the destination cocktail bar, PLUME. Guests are invited to experience the warm hospitality and graceful luxury that has defined Pan Pacific Singapore for four decades.

Scan the QR Code  
to view all offers



7 Raffles Boulevard, Singapore 039595  
E: +65 6336 8111 | Toll-Free: 800 852 6855 | enquiry.ppsin@panpacific.com

PAN PACIFIC  
SINGAPORE

# FESTIVAL HIGHLIGHTS



**SINGAPORE GARDEN FESTIVAL**

4 - 12 July 2026  
Gardens by the Bay  
10<sup>th</sup> Edition

## MARKETPLACE FREE ADMISSION

### HIGHLIGHTS @ MARKETPLACE

- PLANTERS MARKET X SINGAPORE GARDEN FESTIVAL 2026 MARKETPLACE

Ticketing @  
Floral Fantasy

## THE MEADOW

### HIGHLIGHTS @ THE MEADOW

- SHOW GARDENS: ALL-STARS EDITION
- FLORAL WINDOWS TO THE WORLD CHAMPIONSHIP
- LANDSCAPE DESIGN CHALLENGE
- 14TH INTERNATIONAL FDSS CUP
- FLORAL ROLLER COASTER
- NATURE'S CAROUSEL PLAY GARDEN
- SILVER GARDEN
- SUNKISSED: A CELEBRATION OF SUNFLOWERS
- FRUIT ORCHARD
- WILDFLOWER MEADOW
- FLORAL VORTEX
- KNOWN BY FLOWERS LIGHT INSTALLATION
- BANDSTAND
- THE MARQUEE
- RISIS
- FESTIVAL SHOP
- F&B

Ticketing  
Meadow Bridge  
Entrance

Ticketing  
Meadow  
Entrance

## FLOWER DOME

### HIGHLIGHTS @ FLOWER DOME

- SINGAPORE ORCHID SHOW
- ORCHID EXTRAVAGANZA

Ticketing @  
Canopy

## SUPERTREE GROVE

### HIGHLIGHTS @ SUPERTREE GROVE

- SINGAPORE GARDENERS' CUP
- SINGAPORE GARDENING SOCIETY
- MY LIVING SPACE
- PENJING AND ARTISTIC STONE EXHIBITION AND COMPETITION 2026
- TENT OF EDIBLE CURIOSITIES
- SG CAUDEUX COMPETITION AND SHOWCASE
- FRAMED BY NATURE
- SENSORY GARDEN: FOREST OF SWEET DELIGHTS
- FLORAL MIRROR MAZE
- FLORAL INFINITY MIRROR

Ticketing  
Supertree Grove  
Entrance

Ticketing  
Main  
Entrance

Ticketing  
Main  
Entrance

Ticketing  
Main  
Entrance

Ticketing  
Main  
Entrance

Ticketing  
Main  
Entrance

Ticketing  
Main  
Entrance

Ticketing  
Main  
Entrance

Ticketing  
Main  
Entrance

Ticketing  
Main  
Entrance

Ticketing  
Main  
Entrance

Ticketing  
Main  
Entrance

Ticketing  
Main  
Entrance

Ticketing  
Main  
Entrance

Ticketing  
Main  
Entrance

Ticketing  
Main  
Entrance

## Opening Hours:

**Singapore Garden Festival:**  
10am to 10pm (Last admission at 9.30pm)

**Flower Dome:**  
9am to 9pm (Last admission at 8.30pm)

**MarketPlace:**  
10am to 8pm (Free admission)

Scan for more info:



go.gov.sg/sgf

**Opening Hours:**

**Singapore Garden Festival:**  
10am to 10pm (Last admission at 9.30pm)

**Flower Dome:**  
9am to 9pm (Last admission at 8.30pm)

**MarketPlace:**  
10am to 8pm (Free admission)

Scan for more info:



go.gov.sg/sgf

# FESTIVAL MAP

**Visitor Information**

- Information Counter
- First Aid
- Food & Beverage
- Bus Stop
- Buggy Stop
- Nursing Room
- Toilets
- Lift
- Parking
- Shuttle Stop



Organised by



[sgf.nparks.gov.sg](http://sgf.nparks.gov.sg)  
[www.nparks.gov.sg](http://www.nparks.gov.sg)  
[www.gardensbythebay.com.sg](http://www.gardensbythebay.com.sg)

Follow us on:



SGGardenFest  
NParksBuzz  
gardensbythebay